



Stantec Consulting Services Inc.
3052 Beaumont Centre Circle, Lexington KY 40513

March 26, 2018
File: rpt_005_let_175666001
Revision 0

Tennessee Valley Authority
1101 Market Street
Chattanooga, Tennessee 37402

**RE: Fault Areas
 New CCR Landfill
 TVA Shawnee Fossil Plant
 Paducah, McCracken County, Kentucky**

1.0 PURPOSE

As described in 40 CFR § 257.62(a), an owner or operator of a new CCR landfill is required to demonstrate that the unit is not located in fault areas unless the unit meets certain requirements. This letter documents Stantec's certification that the new CCR landfill at the TVA Shawnee Fossil Plant (SHF) complies with the location restrictions for fault areas in the EPA Final CCR Rule at 40 CFR § 257.62(a).

2.0 SUMMARY OF FINDINGS

The attached demonstration documents that the new CCR landfill meets the requirements set forth in 40 CFR § 257.62(a).

3.0 QUALIFIED PROFESSIONAL ENGINEER CERTIFICATION

I, Michael J. Steele, being a Professional Engineer in good standing in the Commonwealth of Kentucky, do hereby certify, to the best of my knowledge, information, and belief:

1. that the information contained in this certification is prepared in accordance with the accepted practice of engineering;
2. that the information contained herein is accurate as of the date of my signature below;
and
3. that the TVA Shawnee New CCR Landfill meets the requirements specified in 40 CFR § 257.62(a).



March 26, 2018
Page 2 of 2

**RE: Fault Areas
 New CCR Landfill
 TVA Shawnee Fossil Plant
 Paducah, McCracken County, Kentucky**

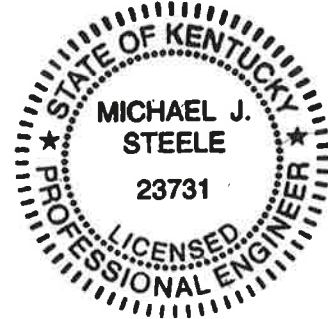
SIGNATURE

DATE 3/26/2018

ADDRESS: Stantec Consulting Services Inc.
 3052 Beaumont Centre Circle
 Lexington, Kentucky 40513

TELEPHONE: (859) 422-3000

ATTACHMENTS: Fault Areas Demonstration



**Fault Areas Demonstration
TVA Shawnee New CCR
Landfill**

New CCR Landfill
TVA Shawnee Fossil Plant
Paducah, McCracken County,
Kentucky



Prepared for:
Tennessee Valley Authority
Chattanooga, Tennessee

Prepared by:
Stantec Consulting Services Inc.
Lexington, Kentucky

March 26, 2018
Revision 0

**FAULT AREAS DEMONSTRATION
TVA SHAWNEE NEW CCR LANDFILL**

March 26, 2018

Table of Contents

1.0 INTRODUCTION 1
1.1 OBJECTIVE 1
1.2 UNIT DESCRIPTION..... 1
2.0 CRITERIA 1
3.0 DEMONSTRATION..... 2
4.0 CONCLUSION 2

LIST OF APPENDICES

**APPENDIX A LITERATURE SURVEY AND DISCUSSION OF GEOLOGY AND
SEISMICITY OF THE TENNESSEE VALLEY AUTHORITY SHAWNEE
FOSSIL PLANT, WESTERN KENTUCKY**
APPENDIX B NEOTECTONIC ANALYSIS

FAULT AREAS DEMONSTRATION TVA SHAWNEE NEW CCR LANDFILL

March 26, 2018

1.0 INTRODUCTION

On April 17, 2015, the "Disposal of Coal Combustion Residuals (CCR) from Electric Utilities" (EPA Final CCR Rule) was published in 40 CFR Parts 257 and 261 of the Federal Register. The Tennessee Valley Authority (TVA) retained Stantec Consulting Services Inc. (Stantec) to review the new coal combustion residual (CCR) landfill unit at the Shawnee Fossil Plant (SHF) for compliance with certain requirements of the EPA Final CCR Rule and, as appropriate, to provide a compliance demonstration report and certification of the fault areas location requirements for this CCR unit pursuant to the EPA Final CCR Rule 40 CFR §257.62.

1.1 OBJECTIVE

As required by § 257.62 of the EPA Final CCR Rule, an owner or operator of new CCR landfills is required to demonstrate that the unit is not located within 60 meters (200 feet) of the outermost damage zone of a fault that has had displacement in Holocene time unless the unit meets certain requirements. The objective of this report is to document that the new CCR landfill complies with the location restriction for fault areas.

1.2 UNIT DESCRIPTION

SHF is a coal-fired, electric-generating plant. The plant is located in McCracken County, Kentucky, along the south shore of the Ohio River near river mile 946, just east of the confluence of Little Bayou Creek with the Ohio River.

The new CCR landfill will be located on the Shawnee East Site, which consists of about 205 acres that TVA acquired in 2016 next to the eastern boundary of the SHF reservation. The new CCR landfill will be constructed in three stages over a total footprint of 88 acres. The embankment will be about 115 feet tall with maximum 4H:1V slopes and will accommodate about 8 million cubic yards of CCR material (fly ash, bottom ash, and gypsum) across an estimated 25-year operational life.

2.0 CRITERIA

The EPA Final CCR Rule § 257.62 requirements for fault areas are:

40 CFR § 257.62(a). *New CCR landfills, existing and new CCR surface impoundments, and all lateral expansions of CCR units must not be located within 60 meters (200 feet) of the outermost damage zone of a fault that has had displacement in Holocene time unless the owner or operator demonstrates by the dates specified in paragraph (c) of this section that an alternative setback distance of less than 60 meters (200 feet) will prevent damage to the structural integrity of the CCR unit.*

FAULT AREAS DEMONSTRATION TVA SHAWNEE NEW CCR LANDFILL

March 26, 2018

3.0 DEMONSTRATION

This demonstration was executed through two studies.

The first study was a review of available literature and published data related to the potential for faulting in the project vicinity. Results do not identify active faults within the established minimum horizontal buffer. The study is titled "Literature Survey and Discussion of the Geology and Seismicity of the Tennessee Valley Authority Shawnee Fossil Plant, Western Kentucky" by Robert D. Hatcher, Jr. Ph.D., P.G. (August 10, 2016). A copy is provided in Appendix A.

The second study was a site specific neotectonics analysis. This study evaluates existing landforms for indications of past fault activity through a compilation of lineaments and surface drainage analyses. Results do not identify the presence of lineaments or drainage characteristics indicative of faults within the established minimum horizontal buffer distance. The study is titled "Shawnee Fossil Plant, Western Kentucky, Neotectonics Analysis" by Stantec Consulting Services Inc. (June 21, 2017). A copy is provided in Appendix B.

4.0 CONCLUSION

Based on this assessment, the new CCR landfill located at SHF meets the requirements of § 257.62 of the EPA Final CCR Rule.

**APPENDIX A
LITERATURE SURVEY AND DISCUSSION OF
GEOLOGY AND SEISMICITY OF THE
TENNESSEE VALLEY AUTHORITY SHAWNEE
FOSSIL PLANT, WESTERN KENTUCKY**

***Literature Survey and Discussion of the Geology and Seismicity of the
Tennessee Valley Authority Shawnee Fossil Plant, Western Kentucky***

***Robert D. Hatcher, Jr., Ph.D., P.G.
Department of Earth and Planetary Sciences
and Science Alliance Center of Excellence
University of Tennessee–Knoxville***



Robert D. Hatcher Jr.,

August 10, 2016

Introduction

The purpose of this report is to provide a literature survey and discussion of known active or potentially active faults in the vicinity of the Tennessee Valley Authority Shawnee Fossil Plant in western Kentucky. The plant is located in the Jackson Purchase (part of Kentucky west of the Tennessee River) 11 mi northwest of Paducah, across the Ohio River almost due west of Metropolis, Illinois (Fig. 1). The plant has a maximum production capacity of 1,750 Mw of electric power.

The references cited in this report are those considered critical for understanding the geology, paleoseismology, and seismicity of the region and near the Shawnee Fossil Plant in western Kentucky. Many of these papers, maps, and reports cited herein contain a plethora of additional citations that would provide much greater detail about the surface and subsurface geology and seismicity in the region. Several of these reports and publications include Kellberg (1951), Finch (1976), Pinckney (1976), Johnston and Schweig (1996), Obermeier (1998), McBride et al., (2002), Martin et al. (2007), Tavakoli, et al., 2010, Pratt (2012), Seid et al. (2013), and Van Arsdale et al. (2013).

An active fault (or earthquake fault) is one that has been demonstrated to have moved during the Holocene (last 11,000 years). This would include the zone of deformation (damage zone) on either side of the fault, which would include geologic structures (folds, subsidiary faults, joints and shear fractures, etc.) that would have been produced as coseismic features during movement on the fault that produced seismicity (California Geological Survey, 2007).

Regional Geology and Seismicity

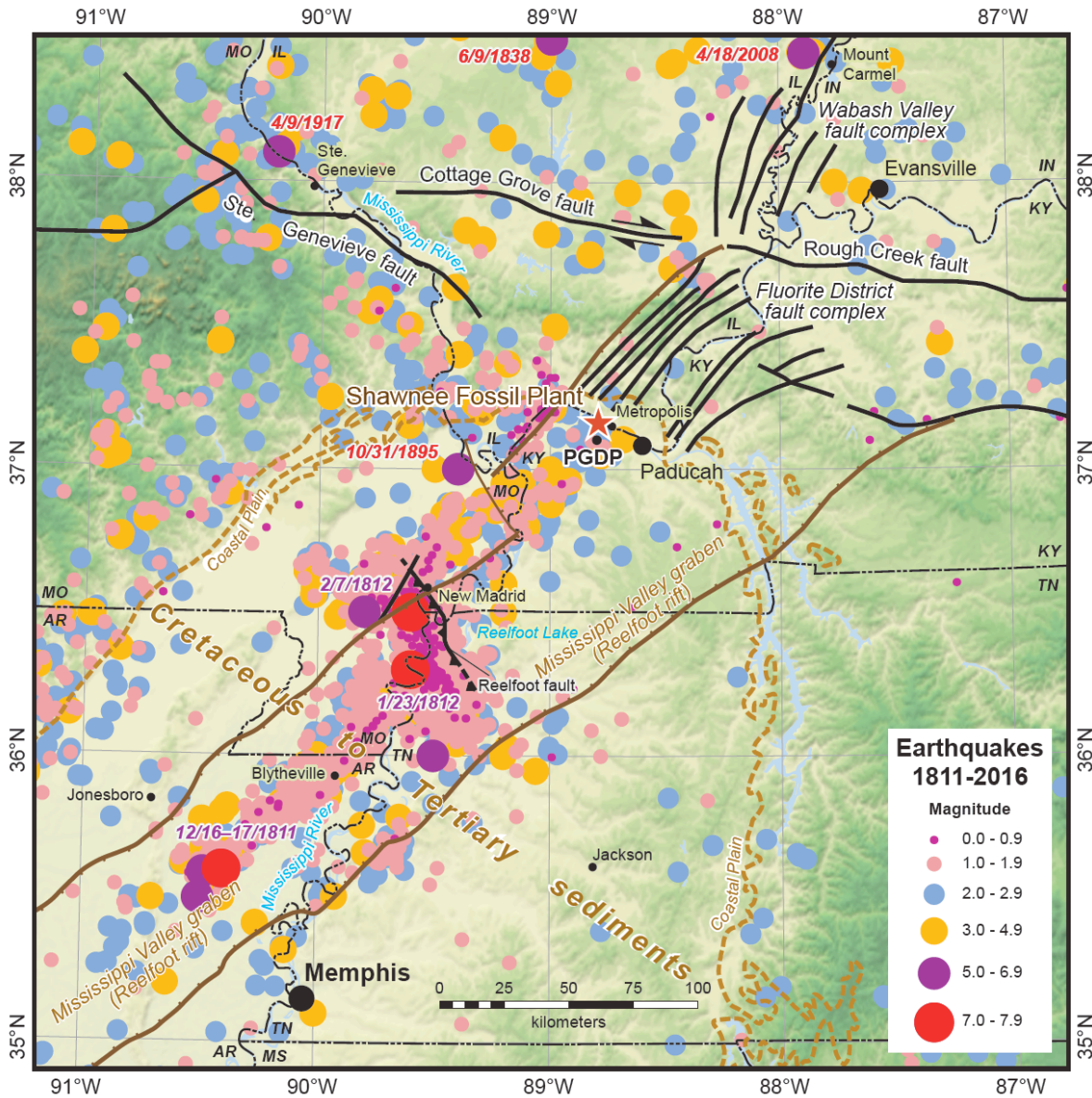
The Shawnee Fossil Plant is located in the Gulf Coastal Plain in the northern part of the Mississippi Embayment. Surface geology in this region consists of late Paleozoic carbonate and clastic sedimentary rocks of the western Highland Rim and southernmost Illinois basin exposed east of the Tennessee River, unconformably overlain by largely unconsolidated Cretaceous and Tertiary sediments, and then by Plio-Pleistocene sediments, including loess deposits, and then Quaternary terrace and other river deposits (Fig. 1). The sedimentary sequence was intruded by numerous small lamprophyre and related igneous rocks during

the late Paleozoic (Pinckney, 1976; Olive, 1980; Seid et al., 2013). A complex northeast-trending normal-fault system of late Paleozoic horsts and grabens, the Kentucky-Illinois Fluorite District fault system, cuts the Paleozoic rocks in this area (Pinckney, 1976; McBride et al., 2002; Martin et al., 2007; Seid et al., 2013). Several of these faults strike toward the Shawnee Fossil Plant from their surface outcrop traces in southern Illinois, but disappear beneath the Coastal Plain sediments and do not appear to be related to the modern patterns of seismicity (Sparks, 2009). McBride and Nelson (2001) and McBride et al. (2002, their Figure 2) reported that several of the young fault suite in southern Illinois, in both seismic reflection profiles and surface exposures, actually displace Cretaceous and Tertiary deposits and early Pleistocene sediments, but not the late Pleistocene sediments, and overlying Pleistocene loess and Quaternary stream deposits. These young faults (inactive for at least 55 ka) may or may not be related to the complex of Paleozoic faults in this area (McBride et al., 2002, their Fig. 2). The Paleozoic Fluorite District fault zone appears to separate the New Madrid seismic zone from the Wabash Valley fault system and seismic zone (Obermeier, 1998) (Fig. 1). A similar group of faults was imaged in seismic-reflection data by Luzietta et al. (2006) in the Crittenden fault zone in eastern Arkansas. This fault system similarly displaces Paleozoic, Cretaceous, and Tertiary sediments, but could not be demonstrated to have displaced the younger Pleistocene sediments, although they may have been folded (very broad interpretation).

To the northwest and southwest of the Shawnee Plant is the northeastern extent of the large early Paleozoic Mississippi Valley graben, identified by aeromagnetic data (frequently referred to as the Reelfoot rift, e.g., Hildenbrand and Hendricks, 1995; Johnston and Schweig, 1996; Van Arsdale et al., 2013). Most of the seismicity of the New Madrid seismic zone is contained within the graben (Fig. 1), and some have suggested that the seismic activity in this and other eastern U.S. intraplate seismic zones is related to early Paleozoic faults (e.g., Johnston and Schweig, 1996; Wheeler, 1996).

The active seismicity, however, only roughly parallels the graben boundaries, and is located in a northeast-trending zone of earthquakes that is truncated (or displaced by) in northwestern Tennessee and southeastern Missouri by a northwest-trending zone of seismicity, a thrust now called the Reelfoot fault (Chiu et al., 1992; Johnston and Schweig, 1996; Cox et al., 2006). A major zone of seismicity continues to the northeast from near the northwest end of the Reelfoot fault that diminished in frequency and magnitude of earthquakes northeastward to the region in Kentucky near Paducah and the Shawnee Fossil Plant (Fig. 1). The northeast-trending faults that are defined by the seismicity in the New

**FAULT AREAS DEMONSTRATION
TVA SHAWNEE NEW CCR LANDFILL**



Sources: Linework - Natl. Atlas Data; EQs - USGS/NEIC, CERI, & Stover, C. W. and Coffman, J. L., 1993; Faults - McBride & Nelson (2001), Hough et al. (2000), and Johnston & Schweig (1996)

Figure 1. Location map for the Tennessee Valley Authority Shawnee Fossil Plant (red star), regional seismicity, major tectonic features and faults, and the locations of major population centers. Dates of earthquakes of $M_w > 5$ are shown in red and purple letters. PGDP- U. S. Department of Energy Paducah Gaseous Diffusion Plant.

Madrid seismic zone have been interpreted as dextral strike-slip faults that are truncated by the Reelfoot fault (Cox et al., 2006; Tavakoli et al., 2010). The zone of greatest frequency and magnitude of historic earthquakes continues northwestward across southernmost Illinois into southeastern Missouri in a zone that parallels the strike of the Paleozoic Ste. Genevieve fault (Fig. 1). The northeastern limit of historical New Madrid earthquakes, which ends immediately southwest of Paducah and the Shawnee Fossil Plant, bounds a region of very low to no historic seismicity in southern Illinois and adjacent Kentucky to an area near the N70°W-trending Paleozoic Cottage Grove dextral fault in southern Illinois where a group of

historical earthquakes mostly of $M_w < 4.0$ occurs on both sides of the Cottage Grove fault (Fig. 1). The current interpretation of the New Madrid seismic zone is that it is related to a crustal-scale dextral strike-slip fault system and flower structure (Tavakoli, et al., 2010; Pratt, 2012). This interpretation is based on earthquake, seismic reflection, and surface geologic data (Tavakoli et al., 2010), as well as computer modeling of the structure (Pratt, 2012). This interpretation fits the available data better than any previous interpretation. The history of the New Madrid seismic zone and the 1811-1812 earthquakes is chronicled by Johnson and Schweig (1996) and Hough et al. (2000).

There is, however, a zone of historic and prehistoric earthquakes along the Wabash River Valley associated with a series of Paleozoic faults, the Wabash Valley fault complex (Obermeier, 1998). This is a currently active seismic zone that has been active for several thousand years (Obermeier, 1988); a $M_w = 5.2$ earthquake followed by a $M_w = 4.7$ seismic event occurred very close to each other <10 miles west of Mt. Carmel, Illinois, on April 18, 2008 (see Stover and Coffman, 1993, and other sources of earthquake data for Fig. 1).

Shawnee Site Geology and Potentially Active Faults Within Two Miles of the Site

The geology at the Shawnee Plant site consists of unconsolidated Tertiary clastic sediments; Pleistocene sand, river deposits, and loess; and Quaternary clastic stream deposits (Kellberg, 1951; Finch, 1967; Martin et al., 2007). There is no consolidated bedrock within several hundred feet of the surface; some of the exploratory boreholes encountered Mississippian Warsaw Limestone at a depth of ~350 ft (Kellberg, 1951).

Finch (1967) made a geologic map of the area in western Kentucky in part of the Joppa quadrangle, which includes the Shawnee Fossil Plant site. There were no faults recognized during his mapping, and he noted that none of the faults mapped in southern Illinois are traceable across the Ohio River into western Kentucky. There are no faults indicated on the site geologic map for the Shawnee Fossil Plant (Lindquist and Bohac, 1993), but this map is derived from Finch's map.

The U. S. Department of Energy Paducah Gaseous Diffusion Plant (PGDP) is located a short distance south of the TVA Shawnee Fossil Plant (Fig. 1). A detailed surface and subsurface investigation of part of the PGDP was investigated for Holocene faulting prior to a proposed expansion of a landfill near the plant (Baldwin et al., 2007). This investigation included data collected from 86 30-ft cores and two seismic-reflection profiles across the landfill site. While several faults were recognized in the seismic-reflection data, none of

these faults displace the youngest stratigraphic units and they concluded that there was no evidence for Holocene faulting at the proposed landfill site (Baldwin et al., 2007).

The U.S Army Corps of Engineers (1993) performed a site-specific seismic response analysis of the PGDP area based on model earthquakes that would produce accelerations of 0.19, 0.27, and 0.63 g for 500-, 1000-, and 5,000-year recurrence events, respectively, affecting the site. This analysis was not based on a particular source, such as the New Madrid seismic zone located a short distance to the southwest, or on knowledge of any active or potentially active faults in the area.

Conclusions

1. The Shawnee Fossil Plant is located immediately northeast of the northeast end of the New Madrid seismic zone, and > 60 miles southwest of the Wabash Valley seismic zone.
2. None of the literature reviewed, including published papers and TVA reports and reports from other agencies, have indicated the existence of any active faults within two miles of the Shawnee Fossil Plant.

References Cited

- Baldwin, J., Kelson, K., Givier, R., and Sundermann, S., Woolery, E. W., and Hampton, S., 2007, Field investigation of Holocene faulting, proposed C-746-U Landfill expansion: Walnut Creek, CA, William Lettis and Associates. Reference derived from a pdf of a presentation at a KRCEE-PGDP Technical Symposium. California Geological Survey, 2007, Fault-rupture hazard zones in California: Special Publication 42, Interim Revision 2007.
- Chiu, J. M., A. C. Johnston, and Y. T. Yang, 1992, Imaging the active faults of the central New Madrid seismic zone using PANDA array data: *Seismological Research Letters*, v. 63, p. 375-393.
- Cox, R. T., Cherryhomes, J., Harris, J. B., Larsen, D., Van Arsdale, R. B., and Forman, S. L., 2006, Paleoseismology of the southeastern Reelfoot Rift in western Tennessee and implications for intraplate fault zone evolution: *Tectonics*, v. 25, TC3019, doi:10.1029/2005TC001829.
- Finch, W. I., 1967, Geologic map of part of the Joppa quadrangle, McCracken County, Kentucky: U. S. Geological Survey Map GQ-652, scale 1:24,000.
- Hildenbrand, T. G., and Hendricks, J. D., 1995, Geophysical setting of the Reelfoot rift and relations between rift structures and the New Madrid seismic zone: U. S. Geological Survey Professional Paper 1538-E, 30 p.
- Hough, S. E., Armbruster, J. G., Seeber, L., and Hough J. F., 2000, On the modified Mercalli intensities and magnitudes of the 1811-1812 New Madrid earthquakes: *Journal of Geophysical Research*, v. 105, p. 23,839-23,864.
- Johnston, A. C., and Schweig, E. S., 1996, The enigma of the New Madrid earthquakes of 1811-1812: *Annual Review of Earth and Planetary Sciences*, v. 24, p. 339-384.
- Kellberg, J. M., 1951, Geology of the Shawnee Steam Plant Site: Tennessee Valley Authority Geologic Branch Report 29-3 #1, 23 p.
- Luzietti, E. A., Kanter, L. R., Schweig, III, E. S., Shedlock, K. M., and VanArsdale, R. B., 1995, Shallow deformation along the Crittenden County fault zone near the southeastern margin of the Reelfoot rift, northeastern Arkansas: U.S. Geological Survey Professional Paper 1530-J, 23 p.

**FAULT AREAS DEMONSTRATION
TVA SHAWNEE NEW CCR LANDFILL**

- Martin, S. L., Anderson, W. H., and Sparks, T. N., 2007, Geologic map of part of the Paducah and Cape Girardeau 30 x 60 minute quadrangle: Kentucky Geological Survey, scale 1:100,000.
- McBride, J. H., and Nelson, W. J., 2001, Seismic images of shallow faulting, northernmost Mississippi Embayment, north of the New Madrid seismic zone: *Bulletin of the Seismological Society of America*, v. 91, p. 1128-139.
- McBride, J. H. Nelson, W. J., and Stephenson, W. J., 2002, Quaternary-age deformation in the northern Mississippi embayment: *Seismological Research Letters*, v. 73, no. 5, p. 597-627.
- Pinckney, D. M., 1976, Mineral resources of the Illinois-Kentucky Mining District: U. S. Geological Survey Professional Paper 970, 15 p.
- Obermeier, S. F., 1998, Liquefaction evidence for strong earthquakes of Holocene and latest Pleistocene ages in the states of Indiana and Illinois, USA: *Engineering Geology*, v. 50, p. 227-254.
- Olive, W. W., 1980, Geologic maps of the Jackson Purchase region, Kentucky: U.S. Geological Survey, Miscellaneous Investigations Series Map I-1217, scale 1:250,000.
- Pratt, T.L., 2012, Kinematics of the New Madrid Seismic zone, Central United States, based on stepover models, *Geology*, v. 40, p. 371-374. doi:10.1130/G32624.
- Seid, M. J., Denny, F. B., and Devera, J A., 2013, Bedrock geology of the Cave-In Rock quadrangle, Hardin County Illinois, and Crittenden County, Kentucky: Illinois State Geological Survey, Prairie Research Institute, 7 p.
- Sparks, T. N., compiler, 2009, Subcrop geologic map of Cretaceous/Tertiary Section, Jackson Purchase region, western Kentucky: U.S. Geological Survey STATEMAP, Series XII, 2009, Contract Report 34, scale 1:125,000.
- Stover, C.W., and Coffman, J.L., 1993, Seismicity of the United States, 1568-1989 (revised), U. S. Geological Survey Professional Paper 1527, 418 p.
- U.S. Army Corps of Engineers, 1993, Site-Specific Earthquake Response Analysis for Paducah Gaseous Diffusion Plant, Paducah, Kentucky, 266 p.
- Van Arsdale, R., and Cupples, W., 2013, Late Pliocene and Quaternary deformation of the Reelfoot rift: *Geosphere*, v. 9, 13 p. doi:10.1130/GES00906.1
- Wheeler, Russell L., 1996, Earthquakes and the southeastern boundary of the intact lapetan margin in eastern North America: *Seismological Research Letters*, v. 67, no. 5, p. 77-83.
- Woolery, E., Baldwin, K., Nelson, K., Hampson, S., Givler, R., and Sundermann, S., 2009, Site-specific rupture hazard assessment—Fluorspar area fault complex, western Kentucky: *Seismological Research Letters*, v. 80, p. 1035-1044.

APPENDIX B NEOTECTONIC ANALYSIS

**Shawnee Fossil Plant, Western
Kentucky**

Neotectonics Analysis



Prepared for:
Tennessee Valley Authority

Prepared by:
Stantec Consulting Service Inc.
500 – 4730 Kingsway
Burnaby, British Columbia
V5H 0C6

FINAL REPORT

175666001

June 21, 2017

Table of Contents

1.0	INTRODUCTION	2
1.1	SCOPE OF WORK	2
2.0	BACKGROUND INFORMATION	3
2.1	DATA SOURCES	3
2.2	PROJECT SETTING	4
3.0	LINEAMENT ANALYSIS	6
4.0	DRAINAGE ANALYSIS	8
5.0	CONCLUSIONS	12
6.0	CLOSURE	13
7.0	REFERENCES	14

LIST OF FIGURES

Figure 1	Shawnee Fossil Plant Study Area	5
Figure 2	Mapped Lineaments Overlain on LiDAR Hillshade and 10 foot Contours	7
Figure 3a	Drainage Network Mapping using 2013 LiDAR Hillshade	9
Figure 3b	Drainage Network Mapping using 2011 Satellite Imagery	10
Figure 4	National Hydrological Dataset	11

LIST OF APPENDICES

APPENDIX A	STATEMENT OF GENERAL CONDITIONS	A.1
-------------------	--	------------

1.0 INTRODUCTION

Stantec Consulting Services Inc. (Stantec) was retained by the Tennessee Valley Authority (TVA) to expand a Location Restriction Demonstration Phase 1 Assessment for the Shawnee Fossil Plant in Western Kentucky (Figure 1). The demonstration is required by the US Environmental Protection Agency's (EPA) disposal of Coal Combustion Residuals (CCR) Rule (US EPA 2015). This report addresses the Location Restriction Demonstration for Fault Areas. The first phase was to complete a literature review of available data of known active faults¹ near the Shawnee Fossil Plant (Hatcher 2016). Hatcher (2016) did not indicate the existence of any active faults within 2 miles of the Shawnee Fossil Plant. The second phase of the Demonstration for Fault Areas comprises a neotectonics analysis near the site of the Shawnee Fossil Plant and a proposed landfill—the subject of this report. This report supersedes the report by Stantec dated February 17, 2017 (Stantec 2017) as the current assessment area has been expanded from a 2 mile-radius to a 2.5 mile-radius.

1.1 SCOPE OF WORK

The scope of this work is comprised of the following three tasks:

1. The first task builds on the literature review findings by utilizing the online USGS archival earthquake map, the online USGS interactive fault map, and Kentucky Geological Survey website. Publicly available maps, reports and scientific literature relevant to the terrain conditions of the site are reviewed.
2. The second task involves a lineament analysis where lineaments mapped from air photographs, Light Detection and Ranging (LiDAR) hillshade or satellite images within at least a 2.5-mile- radius of the Shawnee Fossil Plant (study area), centered on Ash Pond 2 (E 755280.37, N 1956252.35 Kentucky State Plane South) and including the proposed Stage 1 Landfill, will be identified. A 2.5-mile-radius was selected for the Fault Area demonstration to assess faults not only within but nearby the Shawnee Fossil Plant and proposed landfill which could affect the sites. The mapping will be carried out in ArcGIS to facilitate the plotting of maps and viewing of spatial data. Where lineaments are identified, the main directions are plotted. Lineament age indicators will be characterized where possible.
3. The third task involves a drainage analysis of well-defined patterns (dendritic, parallel, trellis, rectangular, radial, annular and contorted) which are not redirected by anthropogenic activity. Deviations from an expected pattern such as flow in a direction that is oblique to the regional topographical gradient could be related to structural or lithological discontinuities.

¹ For the purposes of this report, an active fault is one that has demonstrated movement during the Holocene (last 11,000 years).

2.0 BACKGROUND INFORMATION

2.1 DATA SOURCES

Readily available background information of relevance to the neotectonics analysis and geological conditions of the site was gathered and reviewed. This information included:

- Literature Survey and Discussion of the Geology and Seismicity of the Tennessee Valley Authority Shawnee Fossil Plane, Western Kentucky (Hatcher 2016).
- Geologic map of part of the Joppa quadrangle, McCracken County, Kentucky: U.S. Geological Survey Map GQ-652 (Finch 1967).
- Geologic maps of the Jackson Purchase region, Kentucky: U.S. Geological Survey, Miscellaneous Investigations Series Map I-1217 (Olive 1980).
- Geology of Joppa Quadrangle – Massac County, Illinois. Illinois Geologic Quadrangle Map IGQ Joppa-G (Nelson and Masters 2008).
- Soil Survey of Ballard and McCracken Counties, Kentucky (USDA 1976).
- Soil Survey of Massac County, Illinois (USDA 2009)
- USGS Mineral Resources On-Line Spatial Data: Digital Faults for Illinois and Kentucky
<http://mrddata.usgs.gov/geology/state/>
Accessed September 25, 2016
- Kentucky Geological Map Information Service: 24K Geological Faults and Geologic Formations
<http://kgs.uky.edu/kgsmap/kgsgeoserver/viewer.asp>
Accessed September 25, 2016
- Kentucky Geological Survey Hi-Res National Hydrography Dataset
<http://www.uky.edu/KGS/gis/kyhuc8pic.htm>
Accessed September 20, 2016
- Kentucky Geological Survey Web Map Services
<http://kgs.uky.edu/kgsweb/mapdata.asp>
Accessed September 25, 2016
- Illinois State Geological Survey 2012 LiDAR
<https://univofillinois.maps.arcgis.com/apps/webappviewer/index.html?id=44eb65c92c944f3e8b231eb1e2814f4d>
Accessed June 14, 2017

SHAWNEE FOSSIL PLANT, WESTERN KENTUCKY

TVA SHAWNEE NEW CCR LANDFILL

Background Information

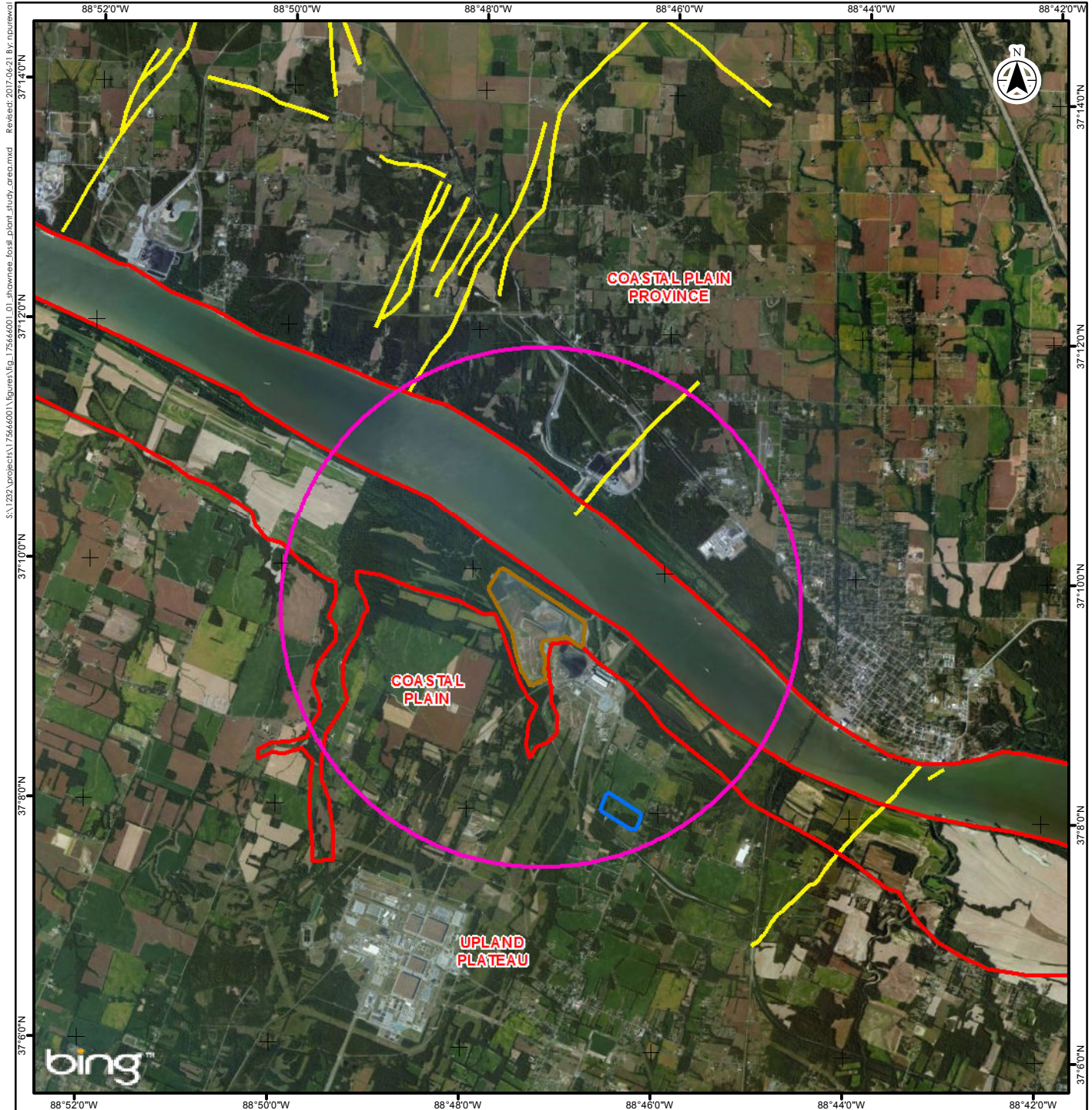
June 21, 2017

2.2 PROJECT SETTING

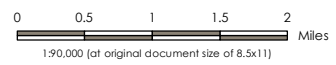
The study area is located within the Gulf Coastal Plain of the Mississippi Embayment Region; a region of flat, low plains dissected by a dendritic network of low gradient creeks and small rivers. The study area can be subdivided into two regions: Coastal Plain and Upland Plateau (Figure 1). The Coastal Plain comprises the lowlands adjacent to the Ohio River and its tributaries, generally at an elevation below 330 feet. Bordering the southwest edge of the Coastal Plain is the Upland Plateau—a dissected plateau surface that ranges in elevation from 360 to 375 feet within the study area. The underlying bedrock geology comprises Paleozoic carbonate and clastic sedimentary rocks which are unconformably overlain by thick, unconsolidated Cretaceous and Tertiary sediments, then by loess and continental deposits, and then by Quaternary lacustrine and fluvial deposits. The Ohio River flows southeast to northwest within the study area and is joined by its north-flowing tributaries: Bayou Creek and Little Bayou Creek immediately west of the Shawnee Fossil Plant.

The published geological fault mapping shows northeast-trending faults in southern Illinois that disappear beneath the Coastal Plain sediments (Nelson and Masters 2008 and Figure 1).

SHAWNEE FOSSIL PLANT, WESTERN KENTUCKY TVA SHAWNEE NEW CCR LANDFILL



- Fault Line
- Shawnee Fossil Plant
- Study Area - 2.5 Mile Radius
- Physiographic Region
- Proposed Stage 1 Landfill



Project Location: Kentucky, U.S.A. 175666001
 Prepared by NPUREWAL on 2017-06-19
 Technical Review by VSTEVENS on 2017-06-19
 Independent Review by RCOATTA on 2017-06-19

Client/Project: Shawnee Fossil Plant Study
 Neotectonics Analysis
 Kentucky, USA

Figure No. 1

Title: Shawnee Fossil Plant Study Area

- Notes**
1. Coordinate System: NAD 1983 StatePlane Tennessee FIPS 4100 Feet
 2. Orthoimagery © Microsoft BING

Disclaimer: Stantec assumes no responsibility for data supplied in electronic format. The recipient accepts full responsibility for verifying the accuracy and completeness of the data. The recipient releases Stantec, its officers, employees, consultants and agents, from any and all claims arising in any way from the content or provision of the data.

S:\1222\Projects\175666001\Figures\Fig_175666001_Shawnee Fossil Plant Study Area.mxd Revised: 2017-06-21 By: [unreadable]

SHAWNEE FOSSIL PLANT, WESTERN KENTUCKY
TVA SHAWNEE NEW CCR LANDFILL

Lineament Analysis
June 21, 2017

3.0 LINEAMENT ANALYSIS

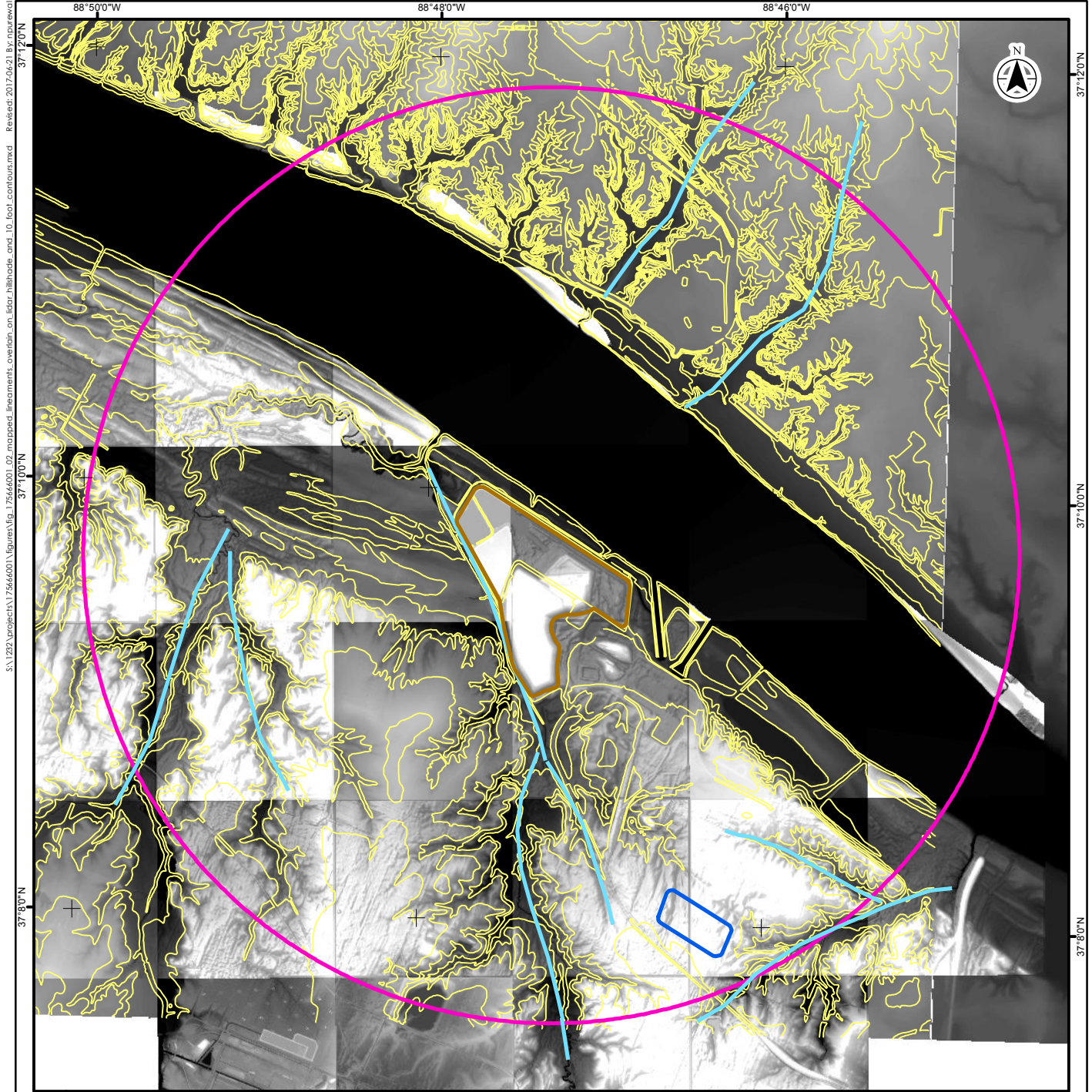
The desktop lineament analysis utilizes digital stereo air photos, 2011 satellite imagery and Light Detection and Ranging (LiDAR) hillshade (5 feet)². The satellite imagery and LiDAR hillshade were viewed in an ArcGIS platform to enable the mapper to view imagery, LiDAR data and other GIS layers readily.

The lineament analysis is based on the visible interpretation of mappable linear, rectilinear, or curvilinear surface features that are expected to reflect subsurface phenomena. Without accompanying geophysical data, the mapping of these surface features is somewhat subjective. Only a few lineaments were mapped, which appear to be reflective of the relatively young Coastal Plain deposits and not the underlying bedrock in the study area (Figure 2). The lineament highlighted in light blue follows the valley axis of Little Bayou Creek. The lower reaches of Little Bayou Creek originally drained north into the Ohio River in 1952 (TVA 1952) and was diverted to make room for the original ash disposal area.

It is inconclusive whether the alignment of Little Bayou Creek was formed by or affected by an active fault because the development of the original ash disposal area obscures the lower reaches of the Little Bayou Creek. Geophysical survey data may help to indicate the absence or presence of a fault for this particular lineament.

² Publicly available 2003 digital stereo air photos and 2013 LiDAR DEM 5FT data was downloaded from the Kentucky Geological Survey website.

SHAWNEE FOSSIL PLANT, WESTERN KENTUCKY TVA SHAWNEE NEW CCR LANDFILL



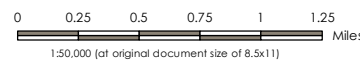
S:\1222\Projects\17566600\Source\Fig_17566600_02_mapped_lineaments_overlain_on_lidar_hillshade_and_10_foot_contours.mxd Review: 2017-06-21 By: ncr/rew

37°12'00" N
37°10'00" N
37°8'00" N

88°50'0"W 88°48'0"W 88°46'0"W



- Lineaments
- Contour (10 foot interval)
- Shawnee Fossil Plant
- Study Area - 2.5 Mile Radius
- Proposed Stage 1 Landfill



Project Location: Kentucky, U.S.A. 175666001
 Prepared by NPUREWAL on 2017-06-19
 Technical Review by VSTEVENS on 2017-06-19
 Independent Review by RCOATTA on 2017-06-19

Client/Project: Shawnee Fossil Plant Study
 Neotectonics Analysis
 Kentucky, USA

Figure No. **2**
 Title

Mapped Lineaments Overlain on LiDAR Hillshade and 10 foot Contours

Notes
 1. Coordinate System: NAD 1983 StatePlane Tennessee FIPS 4100 Feet
 2. Orthoimagery © Microsoft BING

Disclaimer: Stantec assumes no responsibility for data supplied in electronic format. The recipient accepts full responsibility for verifying the accuracy and completeness of the data. The recipient releases Stantec, its officers, employees, consultants and agents, from any and all claims arising in any way from the content or provision of the data.

SHAWNEE FOSSIL PLANT, WESTERN KENTUCKY
TVA SHAWNEE NEW CCR LANDFILL

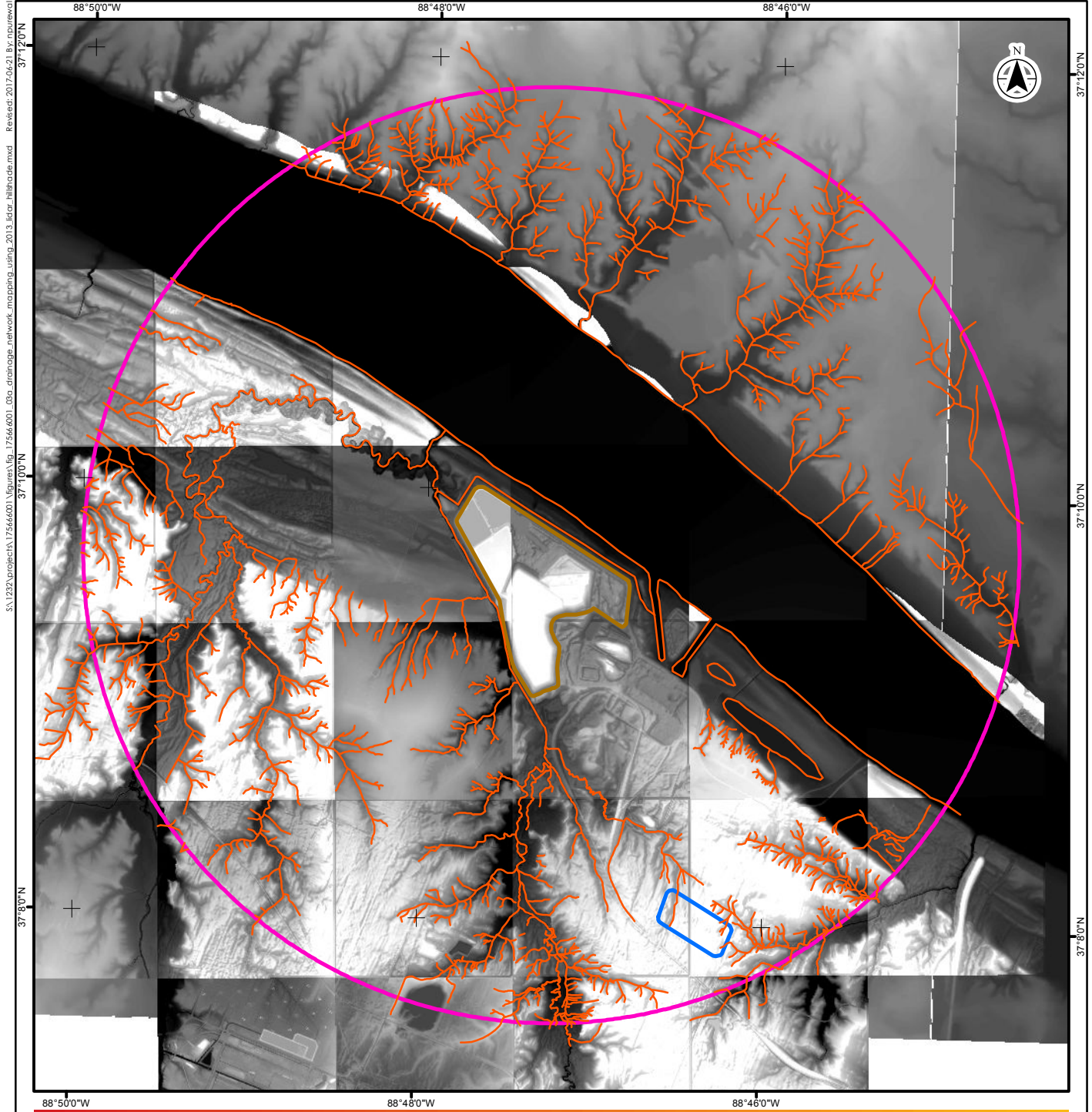
Drainage Analysis
June 21, 2017

4.0 DRAINAGE ANALYSIS

Similar to the lineament analysis, ArcGIS was used for drainage analysis to view the satellite imagery, LiDAR hillshade, and the 1:24,000-scale National Hydrology Dataset for Kentucky. LiDAR hillshade from 2012 was also reviewed using the viewer on the Illinois Geospatial Clearinghouse website. The LiDAR hillshade, satellite imagery, base mapping and hydrologic network datasets were used to delineate the drainage network of streams at viewing scales ranging from 1:2,000 to 1:5,000 (Figure 3a and Figure 3b). A comparison of the Kentucky National Hydrology Dataset flowlines and mapping from the drainage analysis are shown in Figure 4. In the study area, the drainage network has a dendritic drainage pattern which is consistent with the underlying horizontal strata of deep, unconsolidated sedimentary deposits. Deviations from an expected pattern could be related to structural or lithological discontinuities and were checked against the satellite imagery. Observed deviations were judged to be the result of anthropogenic activity (e.g., drainage ditches, straightening of streams for agricultural purposes).

No fault scarps or other tectonic features (e.g., spreading ridges, convergent boundaries) associated with active faults were observed within the study area.

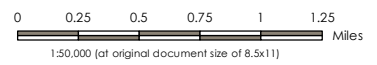
SHAWNEE FOSSIL PLANT, WESTERN KENTUCKY TVA SHAWNEE NEW CCR LANDFILL



S:\1232\project\175666001\Views\Fig_175666001_CCR_drainage_network_mapping_usrb_2018_fig_hillshade.mxd Rev: 2017-06-21 By: nps/review



- Drainage Network
- Shawnee Fossil Plant
- Study Area - 2.5 Mile Radius
- Proposed Stage 1 Landfill



Project Location: Kentucky, U.S.A. 175666001
 Prepared by NPUREWAL on 2017-06-19
 Technical Review by VSTEVENS on 2017-06-19
 Independent Review by RCOATTA on 2017-06-19

Client/Project: Shawnee Fossil Plant Study
 Neotectonics Analysis
 Kentucky, USA

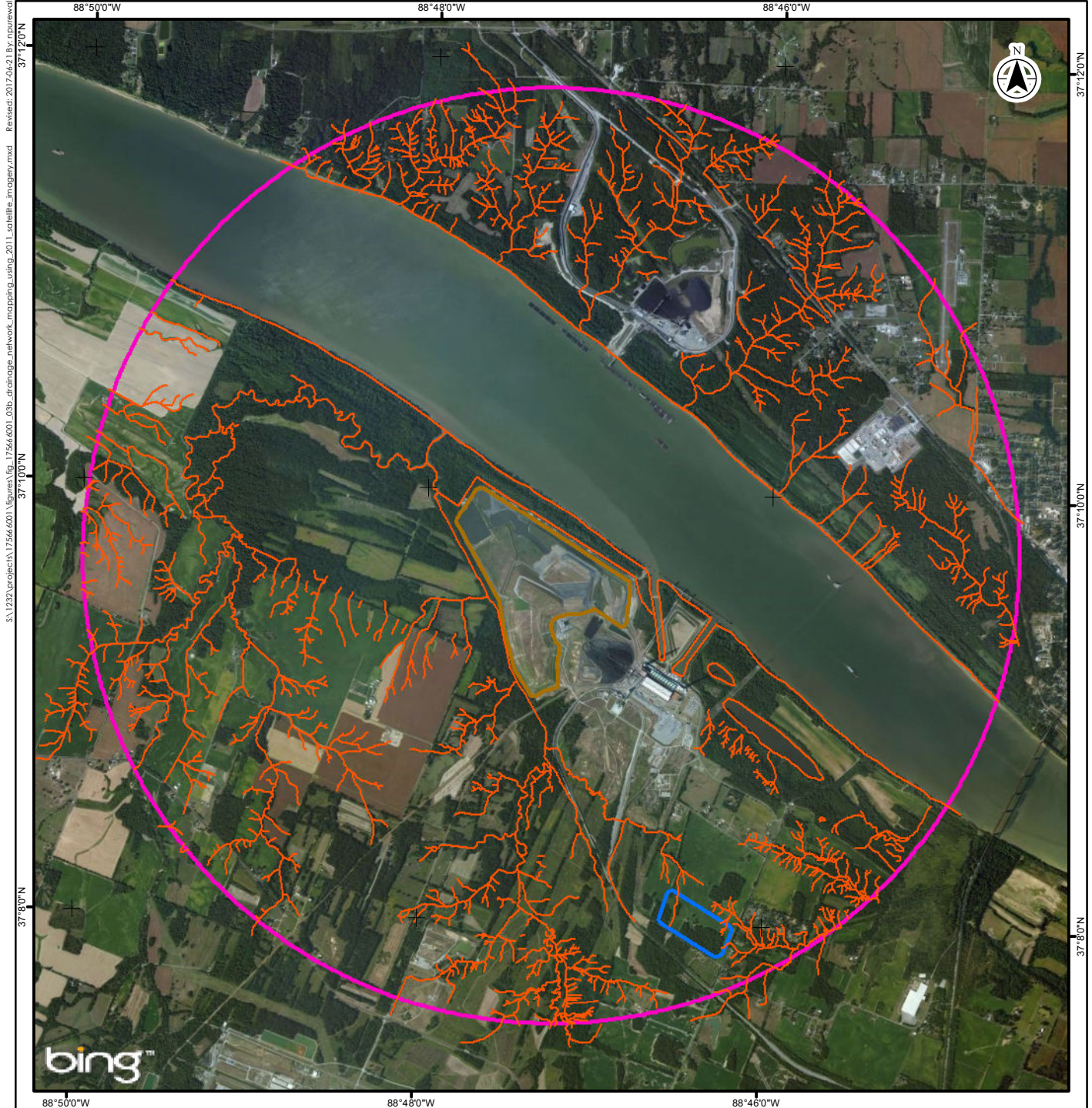
Figure No. **3a**
 Title

**Drainage Network Mapping Using
 2013 LiDAR Hillshade**

Notes
 1. Coordinate System: NAD 1983 StatePlane Tennessee FIPS 4100 Feet
 2. Orthoimagery © Microsoft BING

Disclaimer: Stantec assumes no responsibility for data supplied in electronic format. The recipient accepts full responsibility for verifying the accuracy and completeness of the data. The recipient releases Stantec, its officers, employees, consultants and agents, from any and all claims arising in any way from the content or provision of the data.

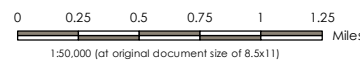
SHAWNEE FOSSIL PLANT, WESTERN KENTUCKY TVA SHAWNEE NEW CCR LANDFILL



S:\1222\project\175666001\MapArea\Fig_175666001_C3B_drainage_network_mapping_using_2011_satellite_imagery.mxd Revised: 2017-04-21 By: nurewal



- Drainage Network
- Shawnee Fossil Plant
- Study Area - 2.5 Mile Radius
- Proposed Stage 1 Landfill



Project Location: Kentucky, U.S.A. 175666001
 Prepared by NPUREWAL on 2017-06-19
 Technical Review by VSTEVENS on 2017-06-19
 Independent Review by RCOATTA on 2017-06-19

Client/Project: Shawnee Fossil Plant Study
 Neotectonics Analysis
 Kentucky, USA

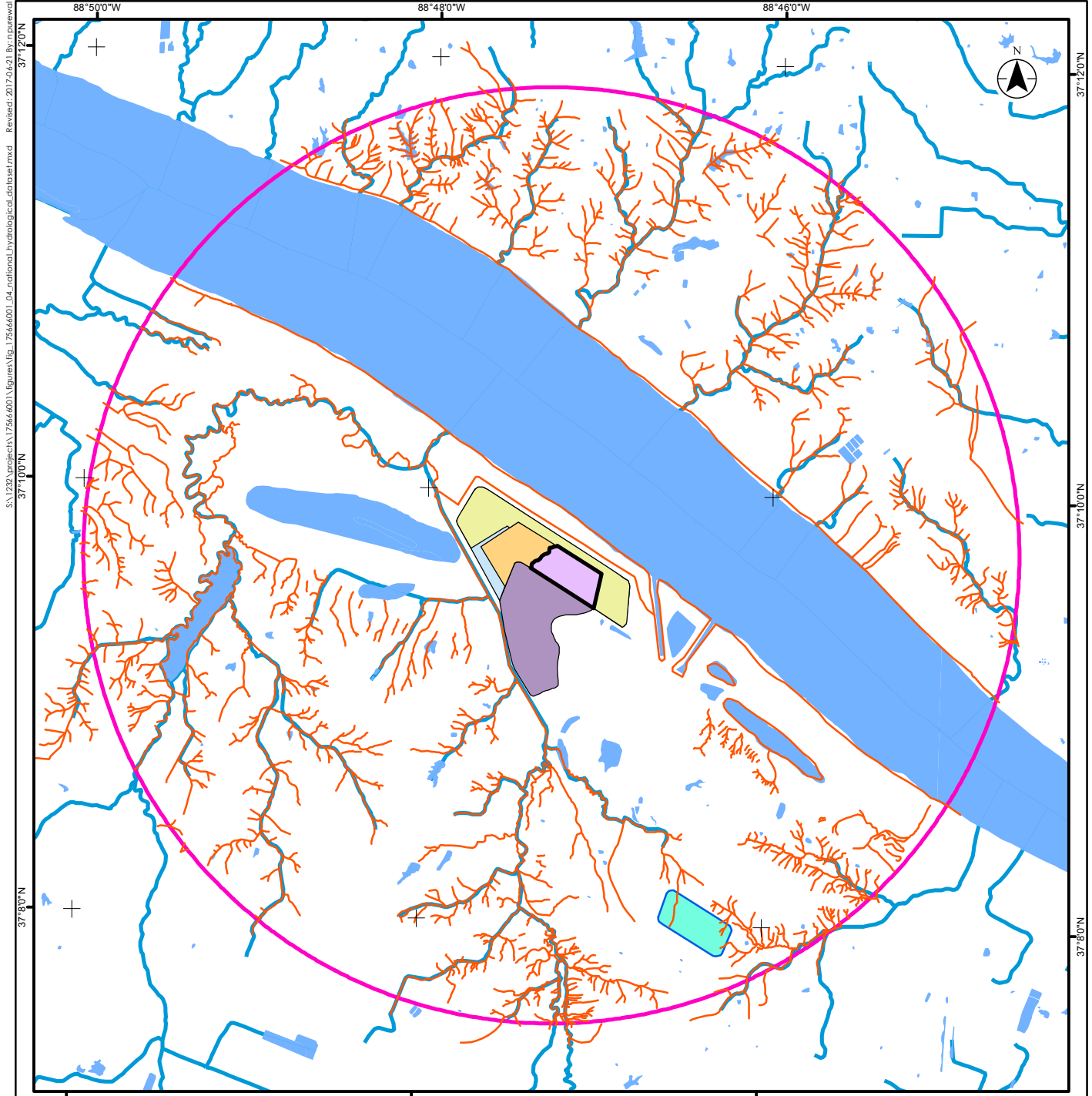
Figure No. **3b**
 Title

Drainage Network Mapping Using 2011 Satellite Imagery

Notes
 1. Coordinate System: NAD 1983 StatePlane Tennessee FIPS 4100 Feet
 2. Orthoimagery © Microsoft BING

Disclaimer: Stantec assumes no responsibility for data supplied in electronic format. The recipient accepts full responsibility for verifying the accuracy and completeness of the data. The recipient releases Stantec, its officers, employees, consultants and agents, from any and all claims arising in any way from the content or provision of the data.

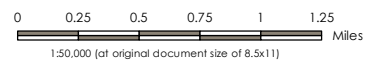
SHAWNEE FOSSIL PLANT, WESTERN KENTUCKY TVA SHAWNEE NEW CCR LANDFILL



S:\1223\projects\17566601\figures\fig_17566601_national_hydrological_dataset.mxd Revised: 2017-04-21 Run: shawnee



- Drainage Network
- Watercourse
- Waterbody
- Study Area - 2.5 Mile Radius
- Current Operations
- Original Ash Pond
- Special Waste Landfill
- Proposed Stage 1 Landfill
- Future Ash Pond
- Future Expansion



Project Location: Kentucky, U.S.A. 175666001
 Prepared by NPUREWAL on 2017-06-19
 Technical Review by VSTEVENS on 2017-06-19
 Independent Review by RCOATTA on 2017-06-19

Client/Project: Shawnee Fossil Plant Study
 Neotectonics Analysis
 Kentucky, USA

Figure No. **4**

Title: **National Hydrological Dataset**

Notes
 1. Coordinate System: NAD 1983 StatePlane Tennessee FIPS 4100 Feet
 2. Orthimagery © Microsoft BING

Disclaimer: Stantec assumes no responsibility for data supplied in electronic format. The recipient accepts full responsibility for verifying the accuracy and completeness of the data. The recipient releases Stantec, its officers, employees, consultants and agents, from any and all claims arising in any way from the content or provision of the data.

SHAWNEE FOSSIL PLANT, WESTERN KENTUCKY
TVA SHAWNEE NEW CCR LANDFILL

Conclusions
June 21, 2017

5.0 CONCLUSIONS

In conclusion, the neotectonics analysis (second phase) of the Location Restriction Demonstration for Fault Areas for the Tennessee Valley Authority Shawnee Fossil Plant in Western Kentucky was completed within a 2.5 mile-radius centered on Ash Pond 2 (E 755280.37, N 1956252.35 Kentucky State Plane South) and including the area of the proposed Stage 1 Landfill. The neotectonics analysis involved a review of published geology, hydrology, soils, fault, earthquake information, a lineament analysis, and a drainage analysis. The conclusion from the second phase is consistent with the first phase by Hatcher (2016) and does not indicate the existence of any active faults within 2.5 miles of the Shawnee Fossil Plant.

The lineament analysis identified a few linear features that follow major valleys; however, these have been interpreted to be related to surface structures or anthropogenic activity. It is inconclusive whether the mapped lineament adjacent to the Shawnee Fossil Plant (Figure 2) was formed by or affected by an active fault because the development of the original ash disposal area obscures the lower reaches of Little Bayou Creek.

Drainage analysis in the study area shows a dendritic drainage pattern which is consistent with the underlying horizontal strata of sedimentary deposits with no obviously visible deviations from well-defined drainage patterns that are not redirected by anthropogenic activity. No active (Holocene-aged) faults that could displace drainage patterns were visibly observed within a 2.5 mile-radius of the Shawnee Fossil Plant.

No fault scarps or other tectonic features (e.g., spreading ridges, convergent boundaries) associated with active (Holocene-aged) faults were observed within a 2.5 mile-radius of the Shawnee Fossil Plant.

**SHAWNEE FOSSIL PLANT, WESTERN KENTUCKY
TVA SHAWNEE NEW CCR LANDFILL**

Closure
June 21, 2017

6.0 CLOSURE

This report has been prepared for the sole benefit of Tennessee Valley Authority and their agents, and may not be used by any third party without the express written consent of Stantec Consulting Ltd. and Tennessee Valley Authority. Any use, which a third party makes of this report, is the responsibility of such third party. Use of this report is subject to the Statement of General Conditions provided in Appendix A. It is the responsibility of Tennessee Valley Authority, who is identified as "the Client" within the Statement of General Conditions, and its agents to review the conditions and to notify Stantec Consulting Ltd. should any of these not be satisfied. The Statement of General Conditions addresses the following:

- Use of the report
- Basis of the report
- Standard of care
- Interpretation of site conditions
- Varying or unexpected site conditions
- Planning, design, or construction

We trust the above information meets with your present requirements. Should you have any questions or require further information, please contact us. Mapping was completed by Sidney Tsang, P.Geo., and Victoria Stevens, P.Ag., P.Geo. This report has been prepared by Victoria Stevens, P. Ag, P.Geo. and reviewed by Sidney Tsang, P.Geo.

Thank you for the opportunity to be of service to you.

Yours truly,

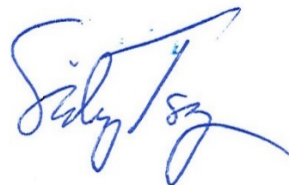
STANTEC CONSULTING LTD.

Prepared by:



Victoria Stevens, P.Ag., P.Geo.
Terrain Scientist
Phone: (250) 655-6972
Victoria.Stevens@stantec.com

Reviewed by:



Sidney Tsang, P.Geo.
Senior Terrain Scientist
Phone: (604) 235-1873
Sid.Tsang@stantec.com

SHAWNEE FOSSIL PLANT, WESTERN KENTUCKY
TVA SHAWNEE NEW CCR LANDFILL

References

June 21, 2017

7.0 REFERENCES

Finch, W. I., 1967, Geologic map of part of the Joppa quadrangle, McCracken County, Kentucky: U. S. Geological Survey Map GQ-652, scale 1:24,000.

Hatcher Jr., R.D. August 10, 2016. Literature survey and discussion of the geology and seismicity of the Tennessee Valley Authority Shawnee Fossil Plant, Western Kentucky; Department of Earth and Planetary Sciences and Science Alliance Center of Excellence, University of Tennessee–Knoxville.

Nelson, W.J. and Masters, J.M. 2008. Geology of Joppa Quadrangle – Massac County, Illinois. Illinois Geologic Quadrangle Map IGQ Joppa-G. Illinois Department of Natural Resources, Illinois State Geological Survey.

Olive, W. W. 1980, Geologic maps of the Jackson Purchase region, Kentucky: U.S. Geological Survey, Miscellaneous Investigations Series Map I-1217, scale 1:250,000.

Tennessee Valley Authority. 1952. Future Ash Disposal Area – Main Plant. Drawing 10C855RO, 35-C-4, September 19, 1952, scale 1:2,000.

USDA. 1976. Soil Survey of Ballard and McCracken Counties, Kentucky

USDA. 2009. Soil Survey of Massac County, Illinois

U.S. Environmental Protection Agency, 2015. Final Rule: Hazardous and Solid Waste Management System: Disposal of Coal Combustion Residuals from Electric Utilities. Federal Register, Volume 80, No. 74, 40 CFR Parts 257 and 261, April 17, 2015.

Illinois Geospatial Clearinghouse LiDAR viewer website

<http://clearinghouse.isgs.illinois.edu/frontpage/>; accessed June 14, 2017

**APPENDIX A
STATEMENT OF GENERAL CONDITIONS**

SHAWNEE FOSSIL PLANT, WESTERN KENTUCKY
TVA SHAWNEE NEW CCR LANDFILL

Appendix A Statement of General Conditions
June 21, 2017

Appendix A STATEMENT OF GENERAL CONDITIONS

USE OF THIS REPORT: This report has been prepared for the sole benefit of the Client or its agent and may not be used by any third party without the express written consent of Stantec and the Client. Any use which a third party makes of this report is the responsibility of such third party.

BASIS OF THE REPORT: The information, opinions, and/or recommendations made in this report are in accordance with Stantec's present understanding of the project as described by the Client. The applicability of these is restricted to the site conditions encountered at the time of the investigation or study. If the proposed project differs or is modified from what is described in this report or if the site conditions are altered, this report is no longer valid unless Stantec is requested by the Client to review and revise the report to reflect the differing or modified project specifics and/or the altered site conditions.

STANDARD OF CARE: Preparation of this report, and all associated work, was carried out in accordance with the normally accepted standard of care in the state or province of execution for the specific professional service provided to the Client. No other warranty is made.

INTERPRETATION OF SITE CONDITIONS: Soil, rock, or other material descriptions, and statements regarding their condition, made in this report are based on a desktop interpretation of both digital aerial photography and LiDAR data. Classifications and statements of condition have been made in accordance with normally accepted practices which are judgmental in nature; no specific description should be considered exact, but rather reflective of the anticipated behaviour of materials or geomorphic processes.

VARYING OR UNEXPECTED CONDITIONS: Should any site or subsurface conditions be encountered that are different from those described in this report, Stantec must be notified immediately to assess if the varying or unexpected conditions are substantial and if reassessments of the report conclusions or recommendations are required. Stantec will not be responsible to any party for damages incurred as a result of failing to notify Stantec that differing site or sub-surface conditions are present upon becoming aware of such conditions.

PLANNING, DESIGN, OR CONSTRUCTION: Development or design plans and specifications should be reviewed by Stantec, sufficiently ahead of initiating the next project stage (property acquisition, tender, construction, etc.), to confirm that this report completely addresses the elaborated project specifics and that the contents of this report have been properly interpreted. Specialty quality assurance services (field observations and testing) during construction are a necessary part of the evaluation of sub-subsurface conditions and site preparation works. Site work relating to the recommendations included in this report should only be carried out in the presence of a qualified geotechnical engineer or geoscientist; Stantec cannot be responsible for site work carried out without being present.